



NEWSLETTER

Its Newsletter time Again!!

We have been busy over the last few weeks, and hope everyone has noticed the freshly tarmacked entrance to the playing field and the urgent tree surgery that had to be carried out to the large tree in the corner of the park to make it safe. Councillors voted to support the first stage of the proposed Village Shop through a Grant Fund offer and we added new benches around the village. Also, undertaken by the Lincolnshire County Council Volunteer Scheme, the Village Green pump, seating, rubbish bin, signs and planters have had a makeover.

Our next projects are the installation of new planters, and making improvements, and savings to the cemetery by replacing the water supply in the cemetery with a water butt. High on the list of priorities for the coming months is the maintenance of the children's play area.

Council Tax

You will have noticed that the Parish Council part of the council tax will increase by 12% next year. This was not a decision we took lightly, especially since we managed to have no increase at all last year. However, for a Band D property this equates to an annual increase in our share of £6.81, or just 13 pence a week. By comparison, Lincolnshire County Council have increased their typical bill by £48.39 and West Lindsey by £27.56



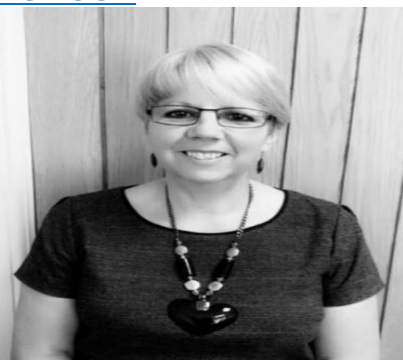
Dog Fouling

Many residents have raised concerns about the increase in dog fouling. As well as being unpleasant, this also presents a serious health hazard. We are aware that while most dog owners are very good at clearing up after their pets, a small number of people are responsible for the current problem. We now have stickers which warn dog owners of the consequences of leaving dog waste.

The parish council have no legal powers in relation to dog waste but West Lindsey District Council are able to prosecute offenders. If you have witnessed dog fouling it can be reported online at <https://www.west-lindsey.gov.uk/communities-safety/community-safety/dog-fouling> If you have video evidence, for example from a Ring doorbell, this can be uploaded. Anyone found guilty faces a fine of £100.

Many thanks to the residents who have placed poo bag holders in the village to ensure that there is no excuse for not clearing up.

New Clerk



On a lighter note, North Kelsey Parish Council appointed Mandy Coote as our new Clerk. Mandy started on the 1st of March and already has shown a commitment to improving the lives and wellbeing of North Kelsey residents. Please give a warm welcome to Mandy when she is out and about in the village.

What's On – Community Events



Litter Picking

We take pride in our village; next date is 6th April 2024 (look for times and places on Facebook) or email Susan March at cllr.s.march@northkelseyparishcouncil.gov.uk

The Women's Institute

Meet at 7.15pm in the Village Hall on the 2nd Wednesday of every month. Visitors & new members are always welcome. For more details call Joyce on 01652 678549

April 20th.	Mental Health and Wellbeing.	Jenny Oyston
May 8th.	Lincolnshire.	Paul Fenwick
June 12th.	Market Rasen Chocolate Factory	
July 10th.	Brewing.	Simon Bratton

The Kelsey Knits & Natters

Every Tuesday afternoon 4 – 6pm at The Butchers Arms Pub.

Everyone is welcome even if they don't knit. They can bring other crafts along.

The Parish Church

Saturday 20th April. "Wine & Wisdom" quiz night. 7pm in the Village Hall

The Methodist Church

Second Monday of the Month Tea & Cake from 2.30 – 4.00pm in the Methodist Chapel

They also hold the North Kelsey History Meeting at the same time. Come along and have a chat and reminisce.

North Kelsey Bowls Club

Saturday 20th April at 2.00 pm. OPEN DAY

Everyone of all ages and abilities is invited to have a go at bowling. No previous experience is necessary, and members will offer tuition. Light refreshments will be available. We hope you will come along, enjoy the afternoon, and join the club. Go on, treat yourself!

The Village Hall

Mondays: 9-15 to 10-15 am, FitSteps. 10-20 to 11-20 am, Pilates

Tuesdays: 6 to 7 pm, Pilates

Wednesdays: 2-3pm Tai Chi

2nd Thursday of every month: Lunch Club @ 12 noon

3rd Thursday of every month: Breakfast Club 9-30 to 11-30 am.

Wednesday 17th April & weekly every Wednesday in school term time, Kelsey Stay & Play Toddler group £2 per family to include refreshments.

Saturday 11th May (date to be confirmed); Race Night with Pie & Peas and bar £5

Wednesday 15th May. 7.30pm. North Kelsey Community Association AGM

1st Grasby Scouts

Tuesday Evenings from 7.30 – 9.00pm Are you aged 10 – 13 and looking for adventure?

Do you want to learn how to light fires, cook on them and other #skillsforlife?

If your answer to any of these questions is yes, then email 1stgrasbygs@gmail.com for more information

A Day in the life of the village shop in the 1950's



In the early 1950's, the corner shop was owned by the Cram family. It had a live-in housekeeper and a gentleman called Frank who worked in the shop over twenty years. It had a chemist and distributed medicines. Also, medicines were prepared for animals.

The shop was on the corner on the Main Street with large windows facing east and south and an imposing entrance door across the corner between them. Inside there was a large area for customers with a tiled floor. By the south facing window were wooden trays which held fruit and vegetables. Counters stretched along the north and west sides of the room with tins and jars of jam and marmalade and big biscuit

containers with glass lids on the selves on the customer side. At the east end by the big window, it had a till and a telephone.

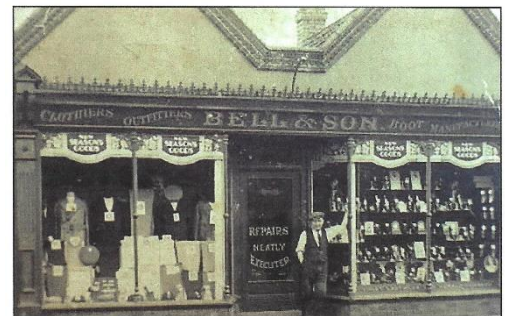
The north or main counter was serviced by three men that wore knee length brown coats when they were handling boxes and moving stock, but they wore white jackets when serving at the counter.

Under the main counter on the staff side were kept tins of crisps and weighed up lard, sugar, and dried fruit. To the east side on the main counter was a set of little cubicles which held bars of chocolate, tubes of Smarties and Fruit Gums. Cigarettes were kept on the shelf on the staff side at head height over the main counter. Shelves on the wall behind held bread, cakes, and jars of sweets, which were sold by weight.



Halfway along the main counter newspapers and magazines were laid out. These were ordered beforehand, and the name of the person was written on it in the top right-hand corner. On the wall behind the newspaper counter a small set of drawers held proprietary pharmaceuticals such as Beecham's Powers and Alderbury's Pastilles with a card inside listing the contents. Under the drawers were stationery and boxes of chocolates and above them toothpaste, shampoo, Amami wave sets and Twink perms, makeup, and nail varnish. On the Drapery

Counter along the west side, a glass display case was on an angle between the counters. In this counter were big wooden drawers containing wool. When customers were knitting a garment, they often reserved the wool, and they bought it a bit at a time as they could afford it and so they got the same dye number for the whole of the garment. Behind the counter were sliding glass doors in front of wooden trays which could be taken out and put onto the counter for customers to see the contents. They contained baby clothes, children's underwear, socks, women's underwear, stockings, and some outwear, tea towels, pillowcases, and other bedding. They also sold men's wear, socks, and some work shirts.



Bells shop over the road sold men's clothing and shoes for all the family.

As well as the stock held in the shop there was twice as much again in the storerooms around the building. The pantry had cheese, bought in bulk, and cut to the customers preference. The warehouse which looked onto the backyard kept cooked meat, big joints of ham and bacon purchased from Curtis of Lincoln. Obviously, all uncooked meat was purchased at the local village butcher's shop.

It was a hardware shop; you went up a ladder by the telephone. Cartridges for shotguns and Christmas annuals (Dandy, Beano, Radio Fun, Film Fun) paint and rolls of wallpaper were also available. They also

stocked wash powered, meths, paraffin and electrical equipment. Electrical equipment was repaired, radio batteries called accumulators, using acid in large bottle called carboys, in wicker baskets.

The shop purchased from local farmers and houses and had regular visits from salesmen. It provided a delivery service on a weekly rota as well as providing morning lunch daily with a flow of customers, that afterwards people sat and read papers or had a sleep until the shop reopened after lunch.

The newspapers were collected every morning from the railway station and the bread came in early morning, the shop opened at 8.00am and closed at 6.00pm. The shop was open every day except Sunday with a half day closing on Thursday afternoon. The shop closed every night with two final jobs of mopping the floor and doing the accounts.

Community Shop Update

A quick summary of what has been completed since the first public meeting in November 2023.

- ❖ For incorporating as a Community Shop it was concluded that the **Community Benefit Society (CBS)** best suited the needs in forming a limited company whilst giving all the benefits of being treated as a charity.
- ❖ North Kelsey Parish Council agreed to support us with a grant to cover the costs of incorporating as a CBS under the sponsorship of the Plunkett Foundation.
- ❖ A bank account is in the process of being opened! (Thanks to the Village Hall in holding monies for us in the meantime.)
- ❖ In the process of official incorporation as a CBS under the Financial Conduct Authority, a process that will be completed in the coming weeks.
- ❖ A structural engineer and builder have been consulted to provide details of the work and costs involved. This building work is stage 2 of the project.
- ❖ A committed steering group has been formed and brings together people from diverse backgrounds such as Business Management, running community charitable operations, Retail Management, and Accountancy.
- ❖ The development of a Community Shop is progressing!

Contact Us

Email is our preferred method of communication where you'll expect a prompt response. Please note the Clerk is employed for 8 hours per week, so there may be a delay in returning calls.



clerk@northkelseyparishcouncil.gov.uk

Councillors

Cllr David Waite - Chairman

Cllr Pamela Bryan Cllr John Cundill Cllr Reg Hunt Cllr Philip Jackson Cllr Susan March - Vice

Cllrs John Slater Cllr Jan Waite Cllr Mary Williams

Your Ward Councillors

Lincolnshire County Council Cllr T. Smith Cllrt.smith@lincolnshire.gov.uk 07773 513411

West Lindsey District Council Cllr P. Morris Cllrp.morris@west-lindsey.gov.uk 07946 322048

The next Parish Council Meeting will be held on Tuesday 9th April 2024 at 7.15pm in the Village Hall. Please feel free to email us with regards to any issues or come along to the meeting, we have a Public Session every month.